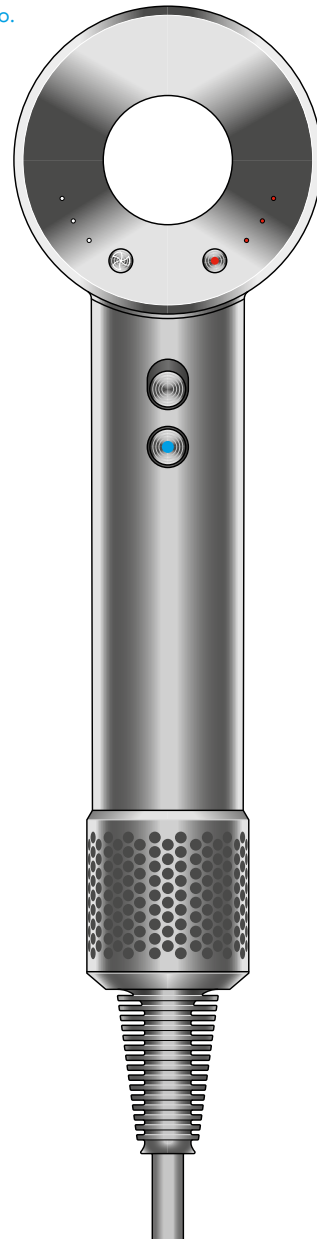


dyson supersonic professional

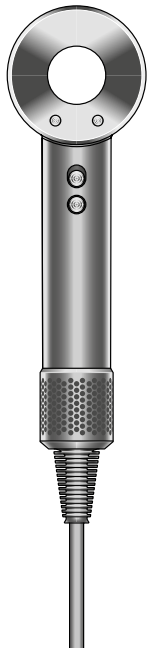
Dyson Supersonic™
professional logo.

User manual



In the box
Getting started
LEDs
Using your hair dryer
Regular filter cleaning

In the box



Dyson Supersonic™ professional hair dryer

View of the back of the Dyson Supersonic hairdryer showing the flow button on the left and the temperature button on the right. The power button and cold shot buttons shown on the handle. The filter cage located at the bottom of the handle.

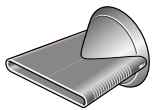


Filter cage

A cylindrical, mesh filter that fits on to the bottom of the Dyson Supersonic hair dryer.

Some attachments may not be included.

You can buy additional attachments at www.dyson.com.



Professional concentrator

Attachment with a flattened, flared nozzle.



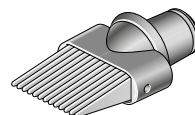
Gentle air attachment

A flat nozzle with a rippled texture.



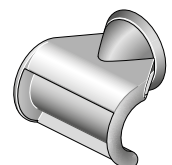
Diffuser

A large, wide, circular nozzle with prongs on the inner surface.



Wide-tooth comb

An attachment with long straight comb prongs.

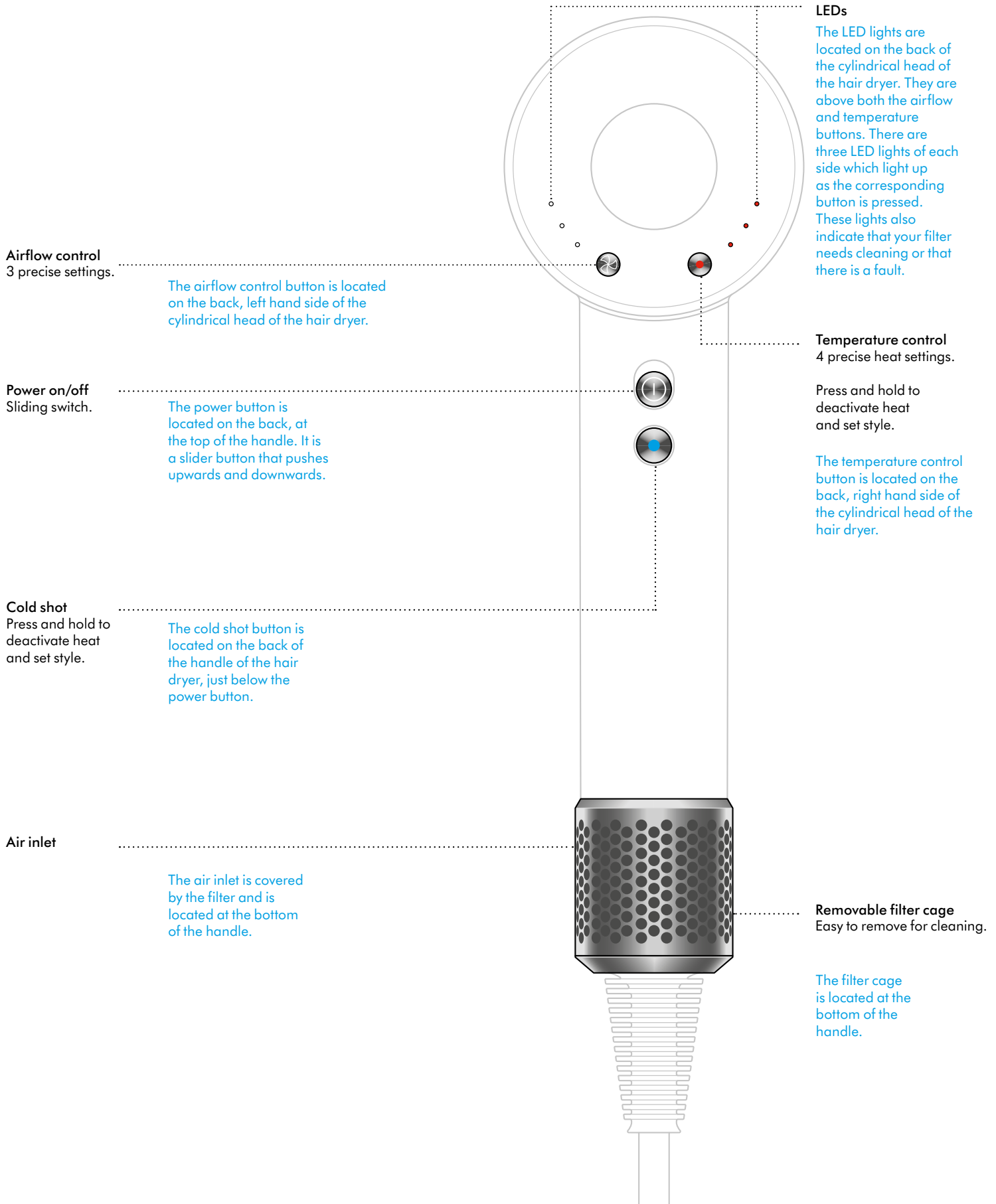


Flyaway attachment

A flat, hook-shaped nozzle.

Getting started

View of the back of the Dyson Supersonic hairdryer showing the flow button on the left with LED lights and the temperature button on the right, also with LEDs. The power button and cold shot buttons shown on the handle.



LEDs

Settings

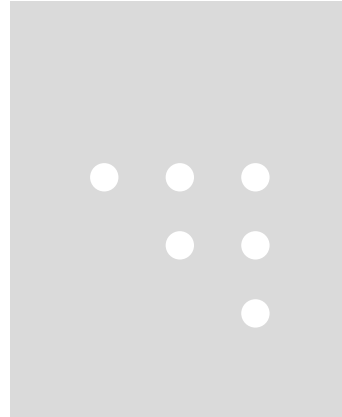
The LED lights indicate which settings you are using.

Flow

Three white LEDs illuminated.

Two white LEDs illuminated.

One white LED illuminated.



Fast

Medium

Gentle

Temperature

Maximum operating temperature in normal working conditions: 221°F.

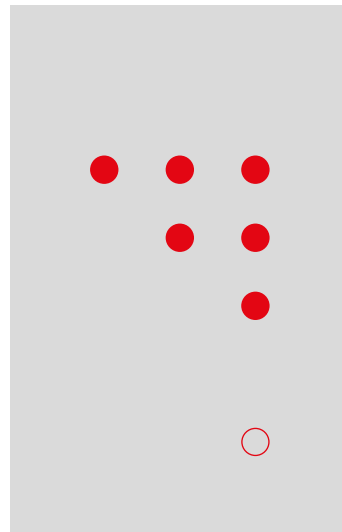
Maximum thermistor temperature at safety shut down: 293°F.

Three red LEDs illuminated.

Two red LEDs illuminated.

One red LED illuminated.

No red LED



High

Medium

Low

Cool

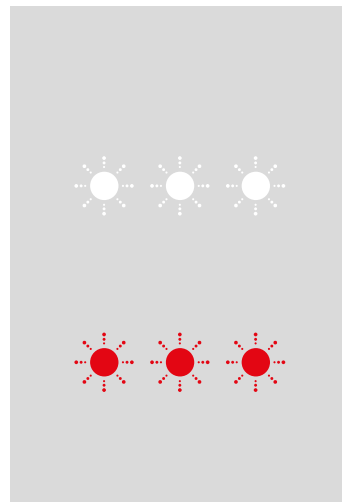
Diagnostics

The LEDs will flash continuously to let you know that your machine needs attention.

Clean the filter. Follow the instructions or watch the video at [dyson.com/yoursupersonic](https://www.dyson.com/yoursupersonic).

If all three red lights continue to flash, contact the Dyson Helpline.

Don't turn back on.



Three flashing white LEDs.

Three flashing red LEDs.

Using your hair dryer

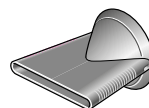
Your Dyson Supersonic™ professional hair dryer has magnetic styling attachments, for easy fitting and rotation during styling.

Remove your attachments using the cool edges.

Heat Shield technology keeps the surface of your styling attachments cool.

Professional concentrator

Wide and thin for precision styling.



Attachment with a flattened, flared nozzle.

Diffuser

Even diffusion to help define curls and reduce frizz.



A large, wide, circular nozzle with prongs on the inner surface.

Gentle air attachment

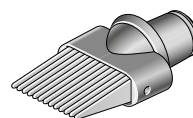
Cooler, gentle drying for fine hair and delicate scalps.



A flat nozzle with a rippled texture.

Wide-tooth comb

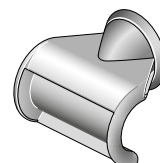
Engineered for curly and coily hair. Lengthen hair completely, or tease out curls just a little bit.



An attachment with long straight comb prongs.

Flyaway attachment

For a smoother finish. Attracts longer hairs and hides flyaways using the Coanda effect. For use only on dry and straight(ened) hair.



A flat, hook-shaped nozzle.

Regular filter cleaning

Check your filter is clear from hair product residue and debris daily, or when the LED lights alert you.

Maintaining performance

Unplug your machine from the mains electricity supply and allow to cool down before cleaning your filter.

The Dyson Supersonic™ professional hair dryer has highly tuned technology to give outstanding performance.

This technology needs to be kept free from dust and hair product residue. Maintenance is required to maintain performance.

A spare filter cage is included to ensure you can continue to use your Dyson Supersonic™ professional hair dryer.

Don't use your machine without the filter unit attached.

Step 1

Make sure you unplug your machine from the mains electricity supply and allow it to cool down before cleaning your filter unit.

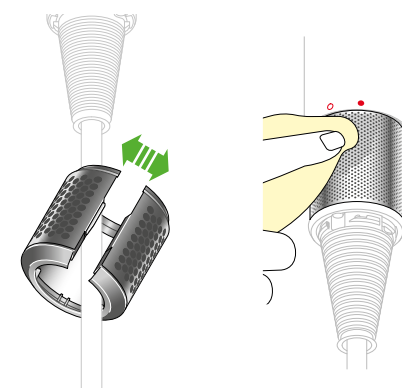
Hold the handle of your machine and pull the filter unit downwards and onto the cable.



Step 2

Gently pull open the filter unit and slide it off the cable.

Wipe the filter mesh on your machine with a dry, lint-free cloth, to remove any debris.



Step 3

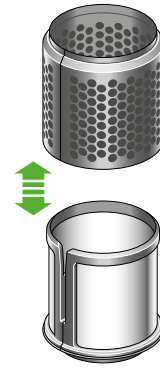
Leave the filter unit to soak in warm, soapy water for at least 30 minutes.

We recommend using a clarifying shampoo or dish soap.



Step 4

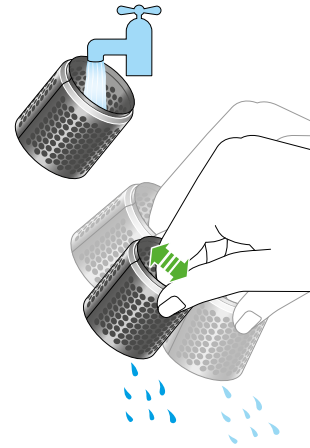
Remove the inner filter from the filter cage.



Step 5

Gently rub with your fingertips to clean each part.

Rinse both parts and dry completely with a dry, lint-free cloth.



Step 6

Check all debris is removed before placing the filter lining back in the filter cage.

Gently pull open the filter unit and slide onto the cable. Slide the filter unit towards the handle and twist until it snaps into place.

